

Daily Handling Sessions!
Meet some of our Exotic Creatures

Would you like to enter a steamy environment full of lush vegetation, waterfalls and **LIVE** butterflies flying around you? Then just step into the magical world of **Pili Palas**.

As well as being Wales' premier butterfly house - it really is a jungle in here! Pop in to meet **Billy** the 14ft Burmese Rock Python, **Begbie** the boa, **Emyr** the waterdragon, **Tecwyn** the Tegu, **Charlie** the cockatoo - and be sure not to miss **Mrs Iggy, Elvis and Donald!**

2008/09 Prices

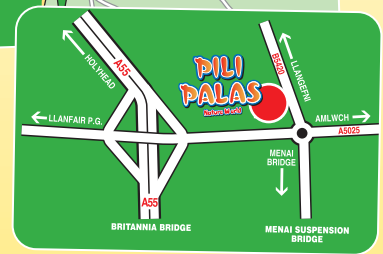
Adults £5.95
OAPs £5.30
Children £4.95
Family and Season Tickets available

Book your Tropical Birthday Party today!

Where we are...
Just follow our brown signs

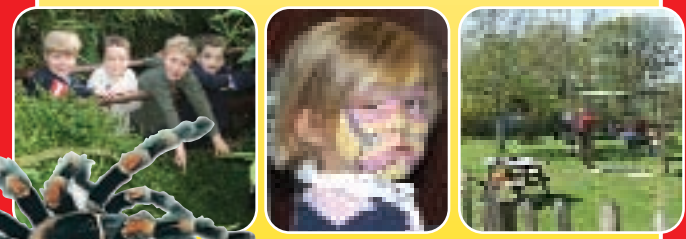


Sat Nav:
N 53° 14.092
W 0004° 11.187
LL59 5RP



Opening Times / Amser Agor

January - Weekends Only
February 9th - March 30th, 10am - 5pm
March 31st - October 31st, 10am - 5.30pm
November 1st - December 31st, 10am - Dusk
Closed December 25th & 26th



Pili Palas
Byd Natur/Nature World

Penmynydd Road, Menai Bridge, Anglesey LL59 5RP
tel. 01248 712 474 • fax. 01248 716 518
e-mail. info@pilipalاس.co.uk • web. www.pilipalاس.co.uk

It's a Great Day Out!

PILI PALAS
Nature World

Butterfly, Bird & Minibeast Palace

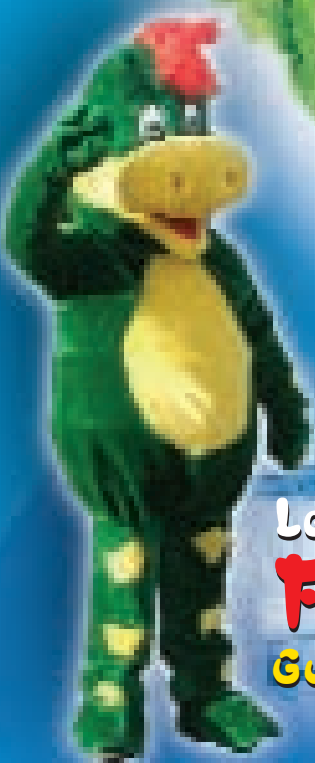
All Ages
All Weather
Attraction

It's a jungle in here!



Attractions at Pili Palas

- 1 Butterfly House
- 2 Bird House
- 3 Lizard Land
- 4 Snake House
- 5 Terrapin Tunnel
- 6 Tropical Hide
- 7 Learning Zone
- 8 Pots Corner
- 9 Farm Yard
- 10 Butterfly Garden
- 11 Bouncy Castle
- 12 Adventure Playground
- 13 Indoor Play Zone
- 14 Nature Trail
- 15 Cafe
- 16 Gift Shop



Lenny the Lizard's
Free Quiz...
Guaranteed to keep you guessing

